



intraoral wound management



Bona-aid™
intraoral wound patch



Bonapac™
hydrophilic periodontal dressing

10⁺ TRUSTED OVER
10 MILLION TIMES



significantly reduce post-operative pain
up to **80%*** comparing with cotton gauze



No zinc & eugenol
No mixing required, directly applied periodontal dressing



The oral cavity, teeming with bacteria, poses a challenge for postoperative wound care. Exposed surgical sites are particularly vulnerable to pain, bleeding, and infection, which can impede the healing process.

A well-suited wound dressing is instrumental in easing discomfort, curbing bacterial growth, and markedly diminishing the likelihood of infection.

“ Such dressings create an optimal environment that nurtures wound recovery and enhances patient comfort throughout the treatment journey.”

implant surgery	tooth extraction	periodontal surgery
GBR	indications	periodontal treatment
medication	scaling	FGG



Bona-aid™
intraoral wound patch



Bonapac™
hydrophilic periodontal dressing

Bona-aid™ and Bonapac™, the two innovative wound dressings are specifically designed to safeguard oral wounds, catering to the unique demands of various surgical procedures.

Available in the form of patch (Bona-aid™) and paste (Bonapac™), the materials BENEFITS in

- accelerating the healing process,
- preventing infections from food, bacteria and smoke
- mitigating pain from cold/warm and oral movement,
- preserving oral functionality,
- social friendly aesthetic.



Bona-aid™
intraoral wound patch



Fast dressed in mouth, like a bandage

Can be directly patched intra-oral for covering moisture wound effectively



Protecting wound

Protecting the wound from external stimuli, therefore preventing secondary infection

Protecting Layer
thickness 0.05mm

Contacting Layer
thickness <0.4mm

Optimal lasting time

Applied in the oral cavity, directly on mucous
(Upper jaw:12~24hrs / Lower jaw:6~12hrs)



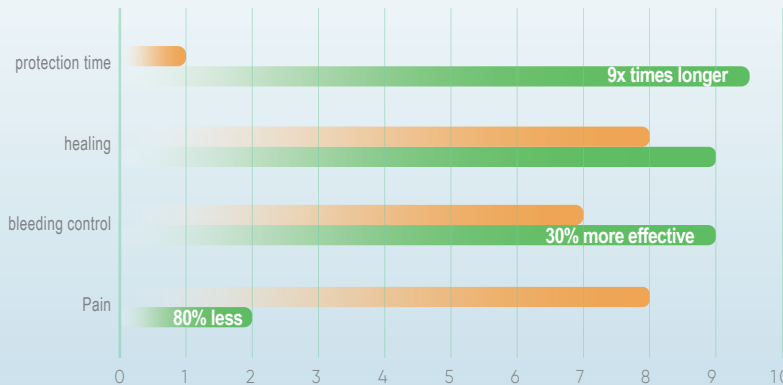
Pain relief and healing accelerated

Aids pain relief, protects cure-helping growth factors, protects wound during early wound healing period



visual comparison between Bona-aid™ and cotton gauze¹

*VAS score in tooth extraction sites with dressing or cotton gauze, evaluated with 60 extractions.



reduce post operative pain
up to

80%



Comfort and prolonged protection



Pain & Bleeding

Bona-aid™ cotton gauze

1. Zhou X, Cai Y, Zhao J. The hemostatic and comforting effects of oral adhesive bandages in tooth extraction: a randomized controlled clinical study. Clin Oral Investig. 2024 Apr 7;28(5):244. doi: 10.1007/s00784-024-05648-9. PMID: 38583113; PMCID: PMC10999378.



Bonapac™
hydrophilic periodontal dressing

- 1 **Good biocompatibility**
Non-toxic, no stimulation
- 2 **Good adhesion, resist to fall off,**
and a reasonable protection time
- 3 **Easy to manipulate,**
strong plasticity
- 4 **Degradation or solubility**
without secondary removal



the innovation of Bonapac™ comparing with existing solutions

Traditional periodontal dressing

Tissue irritating ingredients

Need to be mixed

Difficult to remove and uncomfortable

Prone to mucosal ulceration

Bonapac™

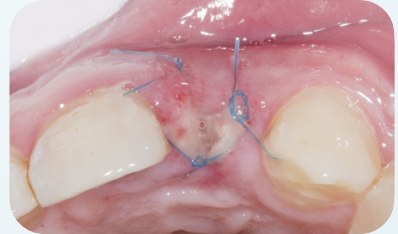
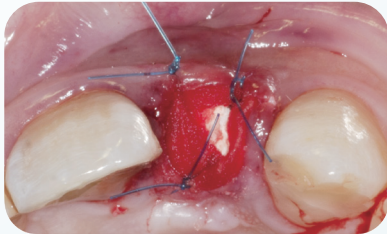
USP grade polymers, without stimulation

No mixing required, easy to pack

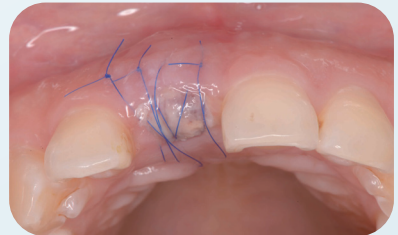
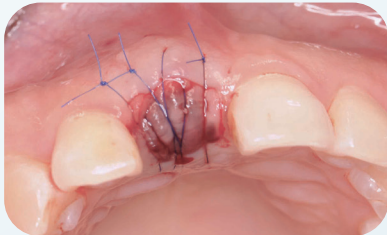
8-24 hours gradually dissolved

Biocompatibility with oral mucosa

Socket preservation

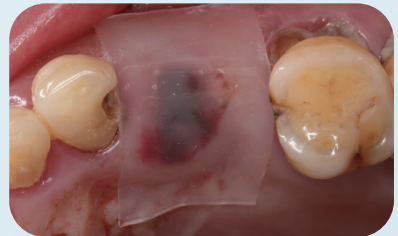


After thorough debridement of the alveolar socket, Bonaplug™ collagen plug is used for site preservation. After interrupted sutures, Bonapac™ is evenly applied to secure the wound, providing a sealed isolation for ~20 hours, stabilizing the blood clot and promoting wound healing. Furthermore, protecting from suture irritation. One week later, epithelial closure is formed on the alveolar ridge, and the soft tissue heals well.



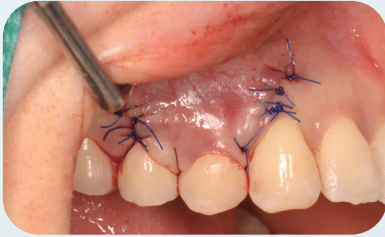
Following the implantation of Bonabone™ bone graft and Bonamem™ membrane into the extraction socket and subsequent suturing, Bona-aid™ is applied to protect the surgical site for up to 18 hours. This application helps prevent infection and stabilize the blood clot. After three days, visible soft tissue healing at the alveolar ridge crest can be observed with the naked eye.

Tooth extraction

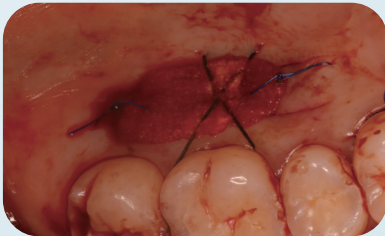


Clean and isolate the area around the extraction socket. Cut Bona-aid™ to the appropriate size for the wound, taking care to avoid areas with mucosal folds when applying it. Press firmly for at least 15 seconds to prevent lifting of the edges. Once applied, Bona-aid™ provides protection for 12+ hours, effectively stops bleeding, stabilizes the blood clot, and promotes tissue healing.

Donor/Recipient Site



In gingival recession repair surgery, after the recipient area is coronally repositioned and sutured, Bonapac™ is applied for closure and protection, which can last for approximately 6-8 hours. Upon re-examination after two months, it is observed that the area of gingival recession has achieved complete root surface coverage, and the wound has healed well.



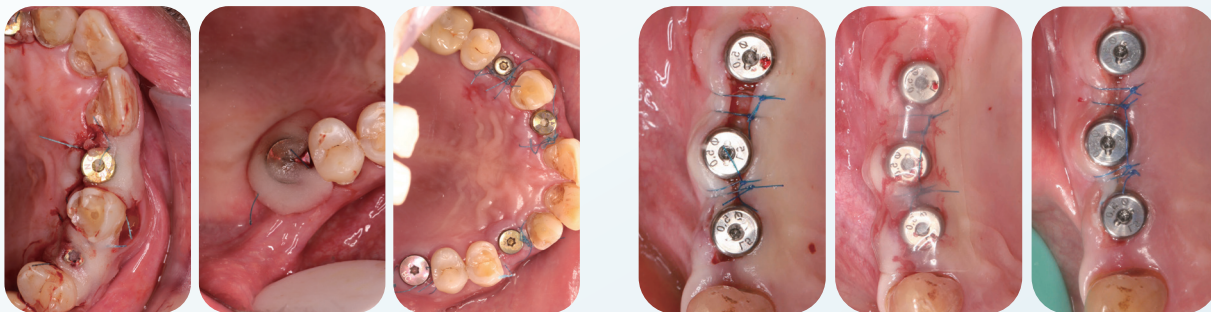
During the procedure of free gingival graft (FGG), after covering the donor site wound with Bonaplug™ collagen sponge and performing cross-suspension sutures, Bona-aid™ is applied to the wound. This provides isolated protection for 10-12 hours postoperatively. Two months after the surgery, the soft tissue at the jaw wound site has healed well.

PAOO



The interdental papilla is preserved by making an incision and reflecting the tooth flap. After cutting the interseptal bone cortex and filling with Bonabone™, the area is sutured. Bonapac™ is then applied to the surgical site to protect the wound for about 6-8 hours. Two weeks post-surgery, upon suture removal, the wound at the surgical site is found to have healed well, with no wound dehiscence or leakage of the bone particles.

Implant surgery



Following the second-stage implant surgery, Bonapac™ is applied to protect the surgical site for approximately 8-12 hours. This application aids in the wound's recovery, effectively reducing the risk of postoperative infection and simultaneously promoting the healing process.

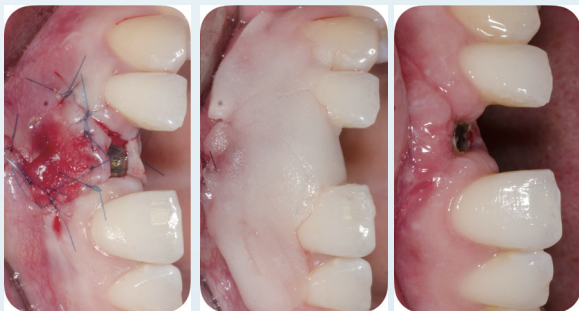
After flap surgery and the placement of a healing abutment, if the soft tissue flap at the alveolar ridge crest cannot be fully closed, Bona-aid™ can be used to provide sealed protection for 8-16 hours. This helps facilitate the formation of a local blood clot, prevents infection, and by the first postoperative day, the soft tissue is essentially closed.


Edentulous implant surgery

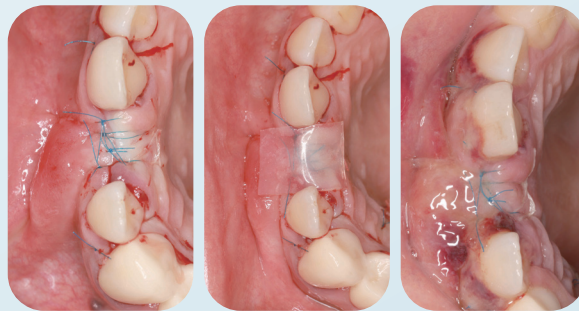



For upper full-arch edentulous implantation, where four implants are placed using a submerged approach, after tension-free suturing, Bona-aid™ is used to provide wound protection for 8-12 hours, which helps to reduce postoperative pain and increase patient comfort. When the sutures are removed 10 days postoperatively, the soft tissue has healed well.

Bone augmentation



 In the case of insufficient bone volume around the implant site in the anterior teeth region, a bone augmentation procedure is required. After suturing, Bonapac™ is applied and covers the surgical site. It gradually dissolves over 7-10 hours, and within 2 weeks, the soft tissue recovery is ideal.



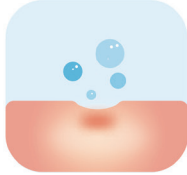
 After implant placement, if there is severe bone defect around the implant, a bone grafting procedure is performed. After adequate tension reduction and suturing, Bona-aid™ is used to provide wound protection for 6-8 hours, which reduces the risk of wound dehiscence and prevents infection. One day later, the soft tissue condition is good.

- Store the product at room temperature (1°~30°), keep the room dry and away from direct sunlight.
- Follow storage conditions to maintain the product's stable performance (adhesion, solubility).
- Bona-aid™ valid for 3 years from the date of use.
- Bonapac™ valid for 2 years from the date of use.

Instructions for Use



Bona-aid™
intraoral wound patch



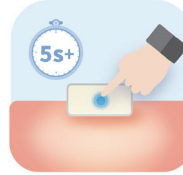
clean the wound



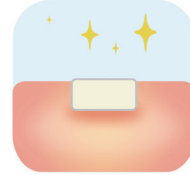
minimum moisture



trim as needed



gently press 5'



optimal attached



Bonapac™
hydrophilic periodontal dressing



moisture the tool



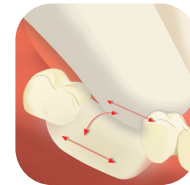
cut as needed



pack to the wound



thoroughly covered



adjust as needed

Hints

- Rinse the wound with sterile or physiological saline.
- Gently wipe the wound and surrounding blood and moisture with gauze.
- When using Bona-aid™, first cut it into a shape and size suitable for the wound attachment, then remove the transparent isolation backing; apply and press for 15-30 seconds (please press repeatedly according to the situation). Be cautious with uneven or overly large wounds that are not easily attached (excessive saliva and exudation may reduce the adhesion time and strength).
- When using Bonapac™, the instrument needs to be dipped in water for application, covering, and shaping, and should not be applied to the cutting edge and occlusal surface.
- Bona-aid™ can protect the wound for 12-24 hours when applied alone (not fixed by sutures), and can be automatically removed when it falls off during sleep or loosens, not to be swallowed;
- Bonapac™ can dissolve on its own within 8-24 hours, no need for removal (excessive saliva and exudation may speed up its dissolution rate).

Cautions



Bona-aid™
intraoral wound patch



Can use with Bonaplug™
for extraction



Remove
when sleep



Do not forcefully
remove within 2h



Do not
swallow



Do not use
on dry wound



Avoid
over moisture



Single use



Do not use on
infected wound

- Bona-aid™ is for single-use only;
- After adhering to the wound, do not forcefully tear or peel it off. The protective layer will come off on its own after the active layer has dissolved completely, and it can be removed or spat out;
- The wound should be kept slightly moist, as excessive wetness can reduce the product's adhesiveness and shorten the usage time;
- It is not recommended for use on severely bleeding, dry, or infected wounds, or at the mandibular wisdom tooth sites;
- It is not suitable for areas with high mobility within the oral cavity;
- Not for use in children under 6 years of age to prevent accidental ingestion or inhalation;
- Avoid consuming hot water and food during use, as it may shorten the duration of effectiveness;
- If it becomes loose or displaced before sleep, it can be removed on one's own to prevent accidental ingestion or inhalation.



Bonapac™
hydrophilic periodontal dressing



Dry the
wound



Moisture
the tool



Can use
with medication



Can use
with Bona-aid™



Single use



Do not use on
infected wounds



Do not use
on top of teeth



Self-dissolvable

- The surgical area should be gently dried with an air gun or cotton rolls (to make the wound surface dry and enhance adhesion);
- Any instruments or gloves used should first be dipped in saline to prevent adhesion to the instruments;
- After tooth extraction, Bonaplug™ can be placed into the socket and secured with figure-eight sutures to prevent the collagen plug from falling out, and Bonapac™ can be applied externally for protection;
- The product is for single-use only;
- It should not be used on severely bleeding, infected wounds, or surgical areas;
- Do not apply the ointment to the incisal edge or occlusion surface to avoid affecting occlusal adhesion, which may lead to material displacement;
- Bonapac™ remains in the patient's mouth for 8-24 hours and does not need to be removed; it will dissolve on its own.

	 Bonapac™ hydrophilic periodontal dressing	 Bona-aid™ intraoral wound patch
	<p>Highly moldable.</p> <p>Offers strong protection for abutment and interproximal wound sites, with excellent sealing properties.</p>	<p>Trimnable shape, saturable for fixation.</p> <p>Strong adhesion on flat surfaces.</p>
EXTRACTION	✓ (PROTECTION FOR CLOSED WOUNDS)	✓ (PROTECTION FOR OPEN WOUNDS)
SOCKET PRESERVATION	✓	✓
CTG DONOR SITE	✓	✓
PAOO	✓	✓
IMPLANT SURGERY	✓	✓
GBR	✓	✓
PERIIMPLANTITIS	✓ (SUGGESTED)	✓ (OPTIONAL)
GINGIVAL SURGERY	✓ (SUGGESTED)	✓ (OPTIONAL)
PERIODONTAL SURGERY	✓ (SUGGESTED)	✓ (OPTIONAL)
CANKER SORE	✓ (OPTIONAL)	✓ (SUGGESTED)

Beijing Waldent Biotech Co., Ltd.

6 Floor, Building No.13, 2nd Sector, No.31,
Kechuang 13 Street, BDA,
Beijing, 100176
China

Tel: +86 10 8722 0266
E-Mail: info@waldentbiotech.com
www.waldentbiotech.com

Specifications are subject to change without any notice.

Some products listed in this catalog are not available for sales in all markets due to pending regulatory clearance.

Please contact the local sales representative for current products availability.

Copyright©2024 Beijing Waldent Biotech Co., Ltd. All rights reserved.