


2025-2026

# dental bio-regeneration **catalog**







The right partner  
in tissue bio-regeneration.  
Trusted by 10+ millions people.

**soft tissue regeneration**

Bonaplug™ collagen sponge  
Bonaplug™ collagen plug  
Bonaplug™ collagen matrix

**hard tissue regeneration**

Bonamem™ collagen membrane  
Bonabone™ bone substitute

**wound management**

Bona-aid™ intra-oral wound patch  
Bonapac™ periodontal dressing  
Bonasil™ suture

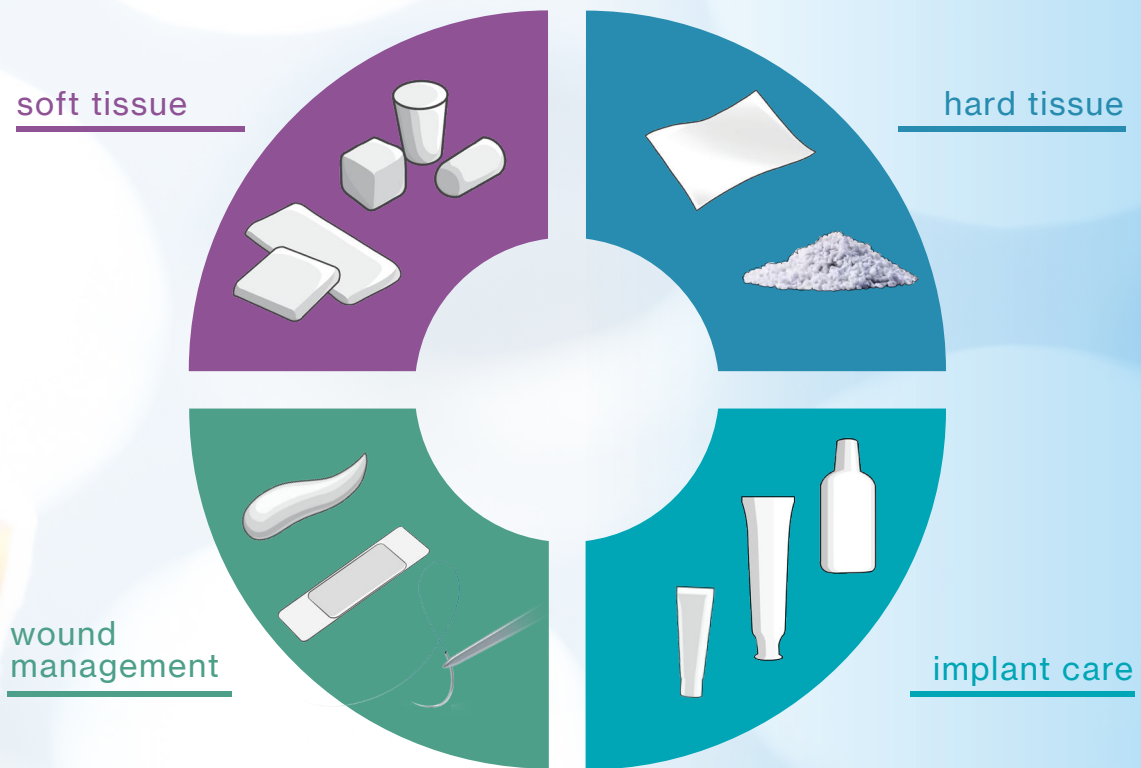
**implant care**

imptimax® implant care toothpaste



innovative, reliable and affordable regeneration solution

## TISSUE REGENERATION



Waldent is a market-leading manufacturer & developer of high-quality collagen regenerative products for surgical and dental wound care, as well as of bone regeneration for all medical disciplines. Furthermore, it is our business philosophy to offer the best clinical practice performance with cost management under modern healthcare challenges.

Join us to experience the best solution for dental tissue management that already helped more than 10 million people globally.

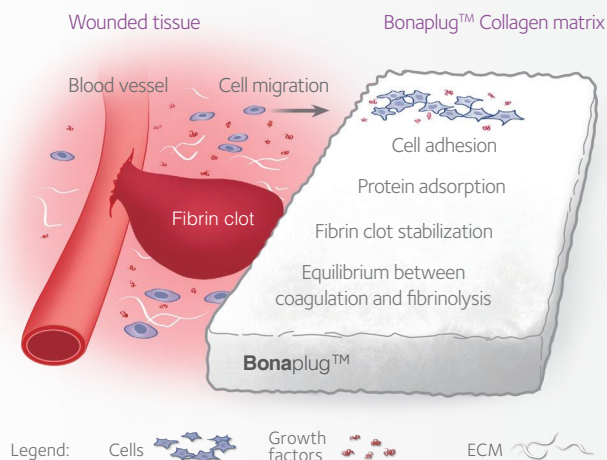
# Bonaplug<sup>TM</sup> collagen matrix

## SUCCESSFUL PROGRESS OF SOFT TISSUE HEALING

It is derived from bovine tendon, preserving natural active type I collagen, with 3D scaffolding structure. Bonaplug<sup>TM</sup> serves as effective hemostat and first class of choice to promote wound healing and fill the surgical void in dental practice.

## PRACTICE ORIENTED DESIGN

Bonaplug<sup>TM</sup> collagen matrix available in 3 different shapes, cone, fleece and cube anatomically designed.

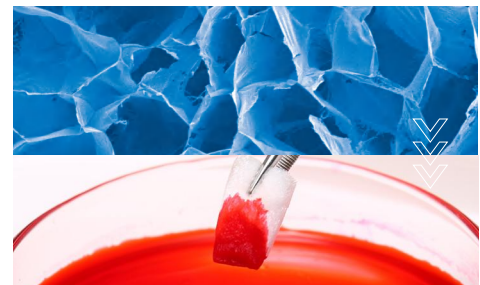


## SCAFFOLDING FOR CELL PROLIFERATION

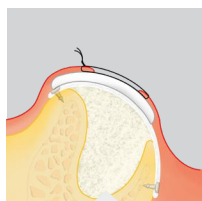
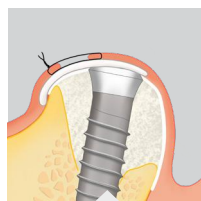
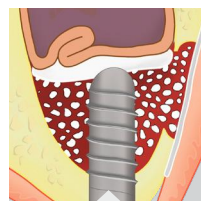
Highly porous collagen scaffold structure, rapidly guides cell adhesion, migration and growth, facilitates tissue regeneration as well as remodeling and fusion of newborn and autologous tissues.

## PROPERTIES

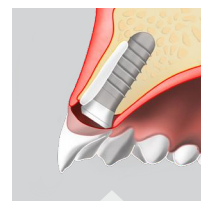
- Resorption within two to four weeks
- Stabilization of blood clot and efficient local hemostasis
- Maintains integrity in the presence of blood and during application
- Wound protection
- Supports wound healing
- Native collagen cone



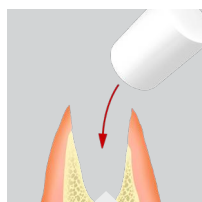
## INDICATIONS

keratinized gingival  
widening(GBR)keratinized gingival  
widening(implant surgery)

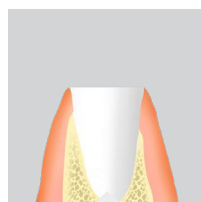
barrier layer for sinus lifting



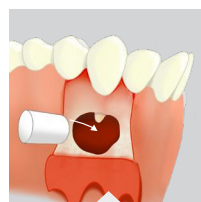
jumping gap filling



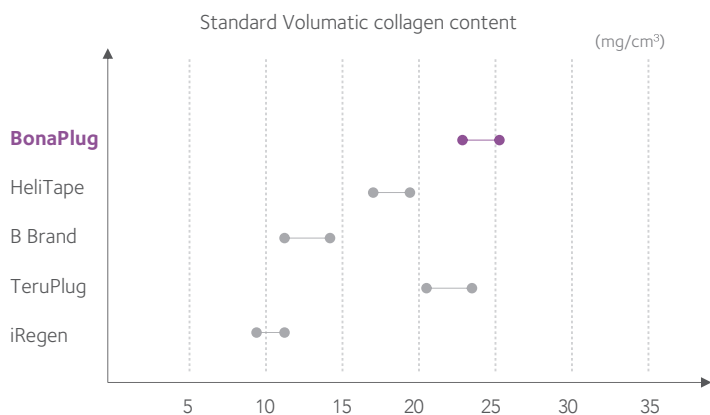
void filling &amp; hemostasis



site preservation

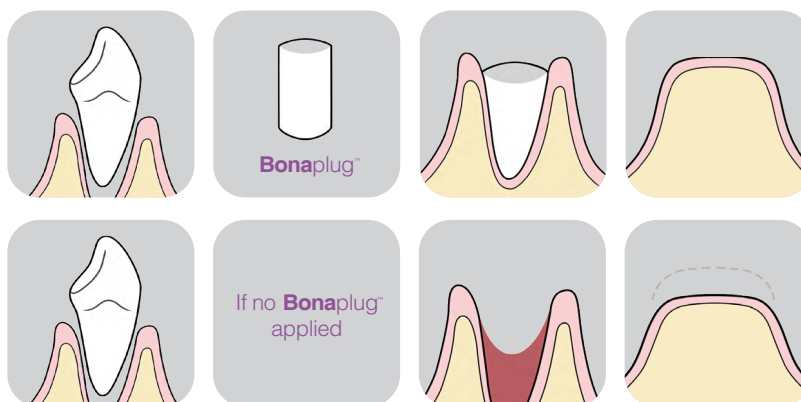


cyst lacuna repair

SUITABLE ABSORPTION TIME  
FOR SOFT TISSUE REMODELING

Bonaplug™ is designed and developed together with dentists. Unlike collagen sponge for general surgeries, Bonaplug™ has 20+mg/cm<sup>3</sup> collagen volume, to provide long protection and enough spacing volume during the absorbing period in the oral cavity 2-4 weeks.

## WHY BONAPLUG™ COLLAGEN CONE IS ESSENTIAL TO EXTRACTED CAVITY?





# Bonabone™

bovine  
bone graft

## Utilizing the power of nature

Bonabone™ native bovine bone graft is produced with Botien® Technology, and TCC process to provide optimal structure closes to human bone and optimal remodeling demand.



### “BEST” for bone regeneration

#### Biological compatibility

- low crystallinity with no organic residues
- chemically and physically similar to human bone
- resorb and remodel far better than synthetic bone grafts

#### Ease of handling

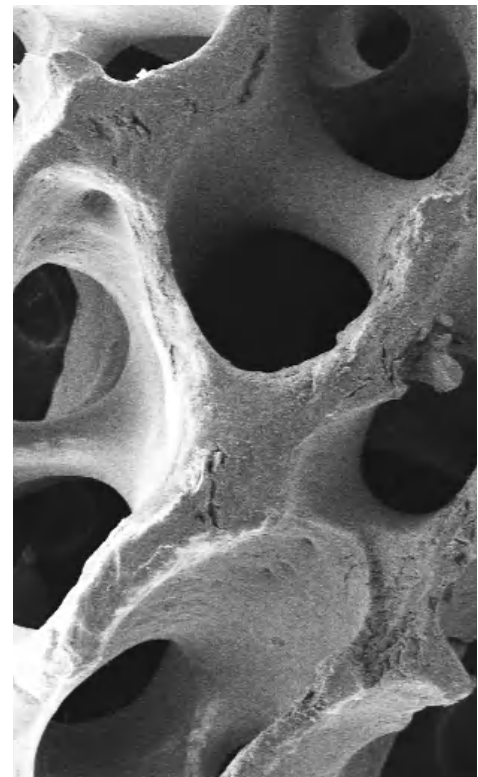
- easily hydrated due to the macro-micro interconnected pores
- similar sizes of the particles

#### Stablized healing

- preferred by angiogenesis for steady remodeling
- maintain a time-stable volume for implant treatment

#### Tissue integration

- osteoconductive feature
- with no immune reacted factors
- facilitate osteointegration surround and within the particles



SEM: Bonabone™ particle @ 40x  
showing native inter-connected structure

inter-connected  
~95µm pores  
facilitate the bonding  
and seeding of osteoblast

## TWO DIFFERENT METHODS OF APPLICATION



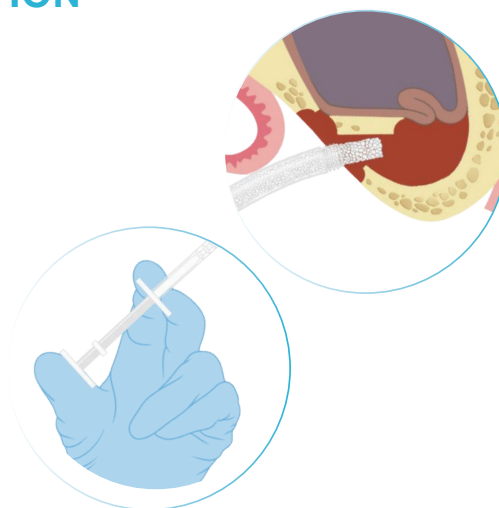
### VIAL

Flexible use for a variety of clinical procedures



### SYRINGE

Easier to use in clinical procedures such as maxillary sinus lifting



	Human bone	Bonabone™
Pore ratio	70-90 Vol%	70-90 Vol%
Macroporous (>1µm)	45 Vol%	46 Vol%
Microporosity (>1µm)	25-30 Vol%	24-38 Vol%
Capillary tube (internal connectivity)	80-95µm	80-95µm
Pore structure	Two types of pores	Two types of pores

## INDICATIONS

- In augmentation around implants placed in immediate extraction sockets, delayed extraction sockets
- Localized ridge augmentation for later implantation
- Alveolar ridge reconstruction for prosthetic treatment
- Filling of bone defects
- Guided bone regeneration in dehiscence defects and guided tissue regeneration procedures in periodontal defects
- Sinus lifting for thin bone plate

# Bonamem<sup>TM</sup> collagen membrane



A bone regeneration guided membrane derived to preserve the native structure and biological feature.

Bonamem<sup>TM</sup> is derived from natural porcine pericardium, particularly thin up to 0.2mm yet durable enough to provide a suitable barrier period.

SEM: Bonamem<sup>TM</sup> 3D networking showing natural inter-connected fibers

## “BEST” for bone regeneration

### Biological compatibility

- prevents adverse reactions with surrounding tissues and organisms

### Ease of handling

- Easy to trim before place over defects and can be repositioned as wanted

### Selective penetration

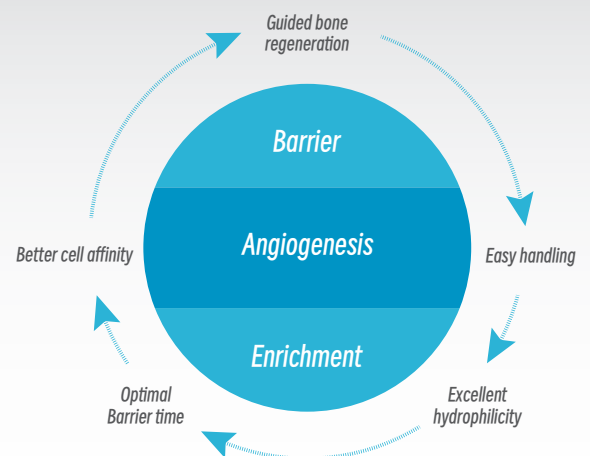
- preventing unwanted epithelial cells ingrowth while allowing osteoblasts to increase

### Space maintenance

- Provides space for a stable clot, allowing bone re-generation
- high tear resistance, less prone to breakage in the presence of tension

### Tissue integration

- facilitates nesting with surrounding tissue and to allow gradual integration of collagen fibers at a max. 6 month degradation





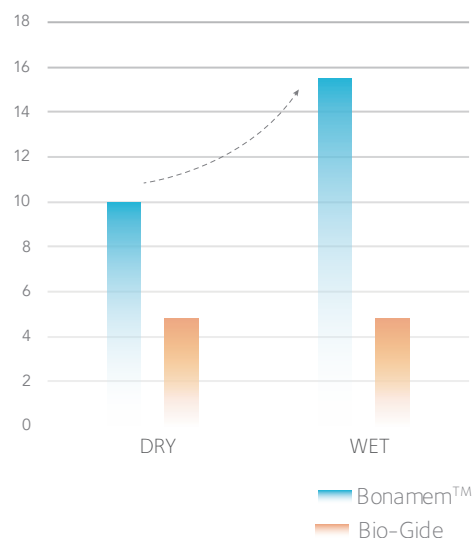
To maximize the unique biomechanical properties of the pericardium, the membrane is processed to exhibit a remarkable tear resistance as well as excellent angiogenesis ability for a excellent bone regeneration result.

60% (9.9→15.5MPa)



Increased in tensile strength after moisture

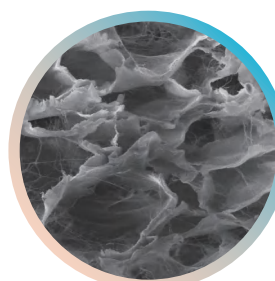
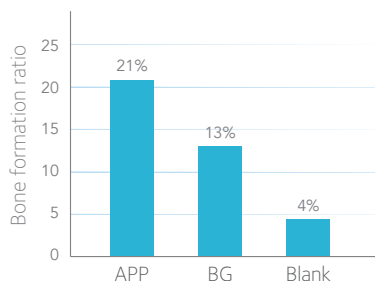
**offer superior resistance during suture or tissue growth**



20% vs. ~13% @4weeks after graft implanted

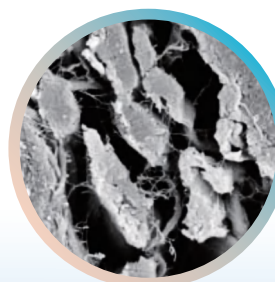
The faster bone formation for Bonamem APP membrane

**Reliable to regain the bone in a fast time manner**



Bonamem™

16.2m<sup>2</sup>/g  
80%



Bio-Gide

10.5m<sup>2</sup>/g  
54.3%



## INDICATIONS

- Augmentation around dental implants
- Alveolar Ridge Augmentation
- Cover for intra-bony defects and root resection
- Periodontal Regeneration

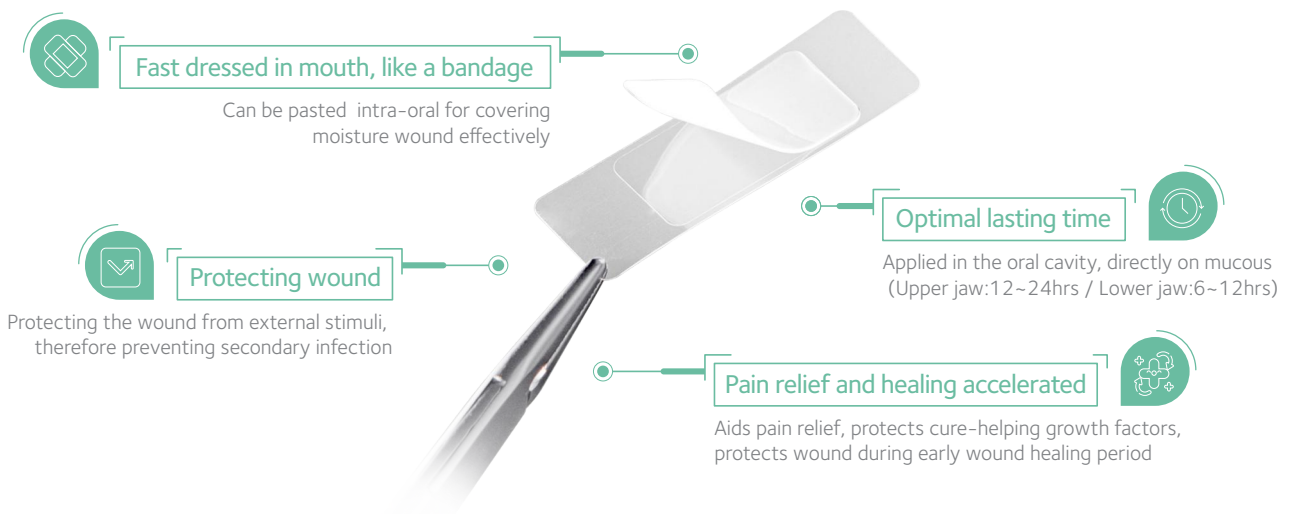
High porosity and stomatal volume

**offer greater penetration of nutrition and facilitate re-vascularization**

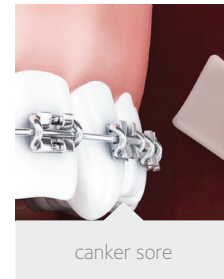
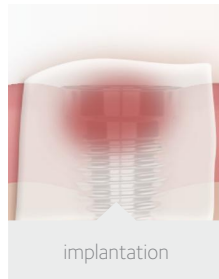
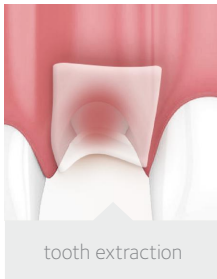
# Bona-aid™

Intraoral wound patch

Bona-aid™ is with the mindset of easy to use, attachable and absorbable intra-oral patch, to biosafely and comfortably protect the affected wound area such as post implant, extraction, orthodontic, oral surgery site and ulcer sites.

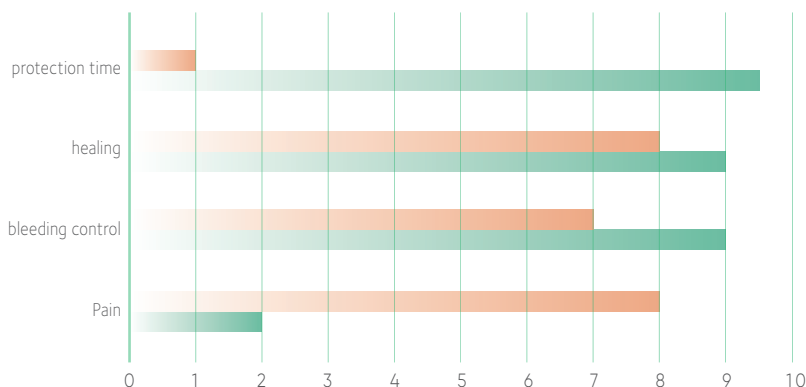


## INDICATIONS



## Comfort and prolonged protection

## Pain & Bleeding



## VISUAL COMPARISON BETWEEN BONA-AID™ AND COTTON GAUZE

VAS score in tooth extraction sites with dressing or cotton gauze, Evaluated with 60 extractions.

cotton gauze  
Bona-aid™

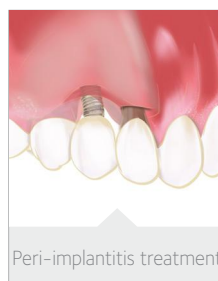
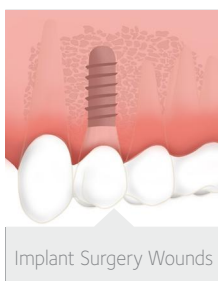
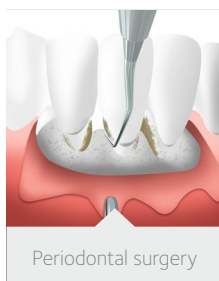
## Hydrophilic periodontal Dressing

A novel alternation to traditional periodontal dressing, Bonapac™ can be packed directly to the woundsite. The formulation offers good ductility and mucosal adhesion, even with the movement of touque and muscle it can provide 8-24 hours of protection and dissovled gradually.

- Good biocompatibility, Non-toxic, no stimulation;
- Degradation or solubility without secondary removal;
- Easy to manipulate, strong plasticity;
- Good adhesion, resist to fall off, and a reasonable protection time.



## INDICATIONS



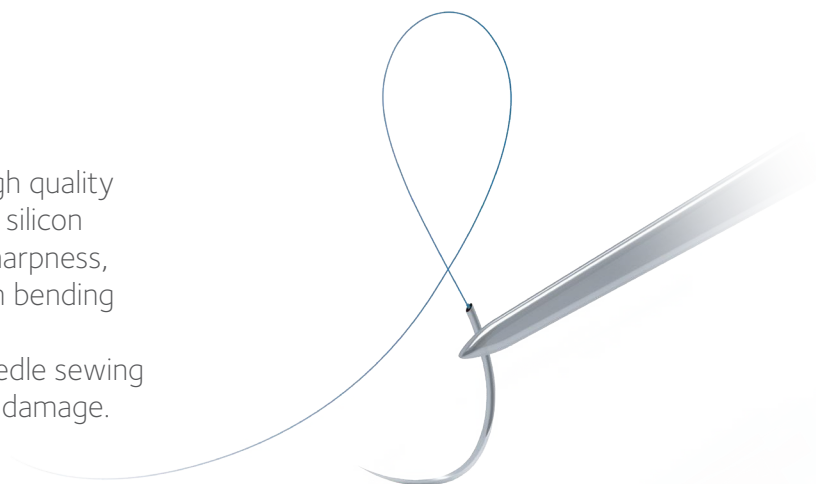
## THE INNOVATION OF BONAPAC™ COMPARING WITH EXISTING SOLUTIONS

Traditional periodontal dressing	Bonapac™
Tissue irritating ingredients	USP grade polymers, without stimulation
Need to be mixed	No mixing required, easy to pack
Difficult to remove and uncomfortable	8-24 hours gradually dissolved
Prone to mucosal ulceration	Biocompatibility with oral mucosa



# Bonasil™

Bonasil™ sutures needles are made of high quality stainless steel. Rational needle shape and silicon layer Technology makes it outstanding sharpness, hard fiber stainless steel material has high bending strength and high ductility. Needle and thread integrated, sewing needle sewing thread Smooth penetration with minimal damage.












## Non-absorbable sutures

- Initial tension is 115% of USP standard;
- Nylon thread: single strand polyamide, inert and stable, smooth thread body, reducing bacterial adhesion;
- Silk thread: soft thread body, not easy to loosen, not sticking to the mouth, high patient comfort.

## Absorbable Suture

- Initial tension is 150% of USP standard, effective tension 7-14 days;
- Combination of absorbability, adhesion and lubrication, with an absorption cycle of 30 days;
- The surface is lubricated by a mixture of propylene glycol ester and ethylene glycol ester copolymer.

Material	Stitch needle	Length	Norm	Wrap
Non-absorbent Needled Nylon suture (Polyamide)	Reverse Angle Needle 3/8 Arc 	60cm	3-0	10 packs/box
	Reverse Angle Needle/ Circular Needle 3/8 Arc 	60cm	4-0	10 packs/box
	Reverse Angle Needle/ Circular Needle 3/8 Arc 	60cm	5-0	10 packs/box
	Reverse Angle Needle 3/8 Arc 	60cm	6-0	10 packs/box
Non-absorbent silk suture with needle (Silk thread)	Reverse Angle Needle 3/8 Arc 	60cm	3-0	10 packs/box
	Reverse Angle Needle 3/8 Arc 	60cm	4-0	10 packs/box
	Reverse Angle Needle 3/8 Arc 	45cm	5-0	10 packs/box
Absorbable Synthetic Suture (PGA)	Reverse Angle Needle 3/8 Arc 	75cm	4-0	10 packs/box
	Reverse Angle Needle 3/8 Arc 	75cm	5-0	10 packs/box

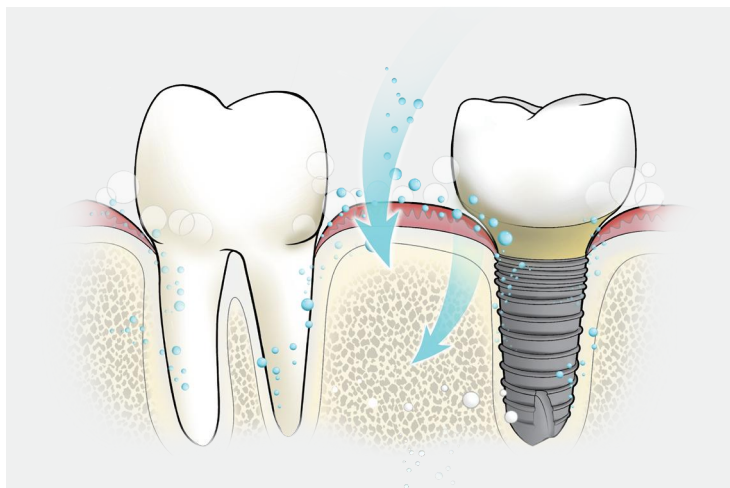
# imptimax®

imptimax® is a novel toothpaste specially designed for daily oral care of people with dental implant.

With the unique oxygen factor patented technology, pharmaceutical grade lactoferrin, combined with scientific fluorine concentration for implant, imptimax is the most professional oral care toothpaste.

## WALD-OX® OXYGEN FACTOR TECHNOLOGY

- When brushing teeth, it releases small bubbles of oxygen factor to penetrate into the gums and inhibit anaerobic bacteria;
- Improvement of periodontal microenvironment, prevention of periodontal disease, peri-implantitis;
- Whitens teeth, freshens breath, eliminates bad breath.





**imptimax® implant care Toothpaste**  
Net wt. 4 oz / 95 g Tube

## DIRECTIONS FOR USE

After flossing, apply a pea-size amount of paste to moistened toothbrush. Brush gently but thoroughly, preferably after each meal and in the morning and at night, or use as directed by a dentist or physician. For optimal results, follow with imptimax® mouthwash.

## SOFT TISSUE REGENERATION



Type	Size	Art.Code	Description
Bonaplug™ Collagen plug			
	1 piece	BP0815	φ 8*15mm
	1 piece	BP1020	φ 10*20mm
	1 piece	BP0915C	φ 9-12*15mm
Bonaplug™ Collagen fleece			
	1 piece	BP25F	25*25mm
	1 piece	BP50F	50*25mm

## HARD TISSUE REGENERATION

Type	Size	Art.Code	Description
Bonabone™ Cancellous granules			
	1 btl / 0,25gr	BS25	0,25-1 mm
	1 btl / 0,5gr	BS50	0,25-1 mm
	1 btl / 1,0gr	BS10	0,25-1 mm
	1 btl / 2,0gr	BS20	0,25-1 mm
	1 btl / 0,5gr	BL50	1-2 mm
	1 btl / 1,0gr	BL10	1-2 mm
	1 btl / 2,0gr	BL20	1-2 mm
	1 Syringe / 0.25cc≈0,15gr	BSP25	0,25-1 mm
	1 Syringe / 0.4cc≈0,25gr	BSP40	0,25-1 mm
Bonabone™ Collagen			
	1 piece	BC5	5*5*7mm
	1 piece	BC7	7*7*7mm
	1 piece	BC10	10*10*7mm
	1 piece	BC15	φ8*15mm
	1 piece	BC20	φ10*20mm
Bonamem™ Collagen membrane			
	1 piece	BM-1	15*20mm
	1 piece	BM-2	15*25mm
	1 piece	BM-3	20*25mm
	1 piece	BM-4	25*25mm
	1 piece	BM-6	30*40mm



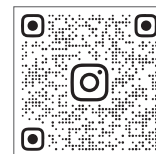
## WOUND MANAGEMENT

Type	Size	Art.Code	Description
Bona-aid™ Intra-oral wound patch			
	1 piece	TA1525	15*25mm
	1 piece	TA1530	15*30mm
	1 piece	TB08	φ8mm
	1 piece	TB15	φ15mm
	1 piece	TC1525	15*25mm
Bonapac™ Hydrophilic periodontal dressing			
	1 tube	BP03	3.0g
	1 tube	BP05	5.0g

## Beijing Waldent Biotech Co., Ltd.

6 Floor, Building No.13, 2nd Sector, No.31,  
Kechuang 13 Street, BDA,  
Beijing, 100176  
China

Tel: +86 10 8722 0266  
E-Mail: [info@waldentmedical.com](mailto:info@waldentmedical.com)  
[www.waldentmedical.com](http://www.waldentmedical.com)



Specifications are subject to change without any notice.

Some products listed in this catalog are not available for sales in all markets due to pending regulatory clearance.

Please contact the local sales representative for current products availability.

Copyright©2025 Beijing Waldent Biotech Co., Ltd.All rights reserved.

**Waldent-257-EN(Rev.2)**